



# MONTHLY MEMBERSHIP PROGRESS REPORT

District 322C5

Results as of: 10/31/2017

GMT: SWADESH RANJAN SAHA

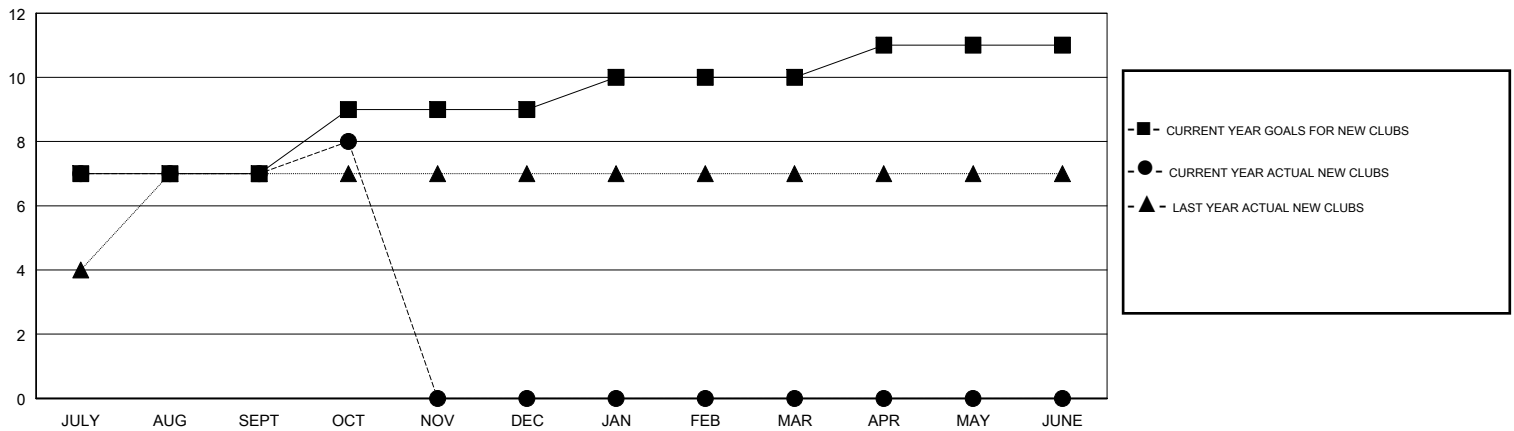
LOCATION INDIA

GMT CA

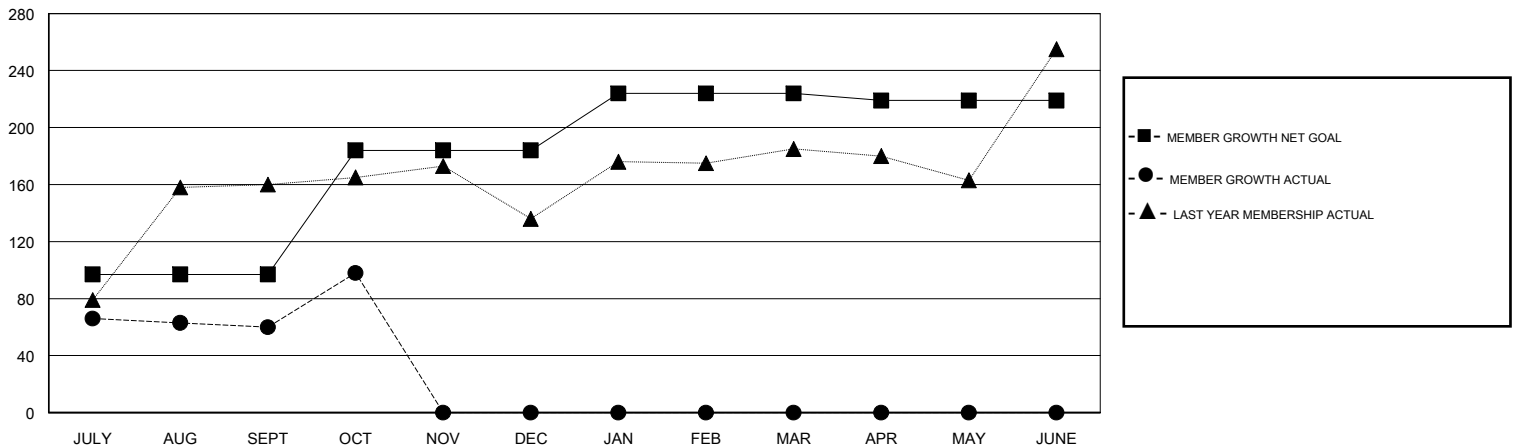
Clubs			
RESULTS FOR 2017-2018			
QUARTER	NEW CLUB GOAL	NEW CLUBS	DROPPED CLUBS
JULY/AUG/SEPT	7	7	0
OCT/NOV/DEC	2	1	0
JAN/FEB/MAR	1	0	0
APR/MAY/JUNE	1	0	0

Members			
RESULTS FOR 2017-2018			
QUARTER	MEMBER GROWTH NET GOAL	MEMBER GROWTH ACTUAL	DROPPED MEMBERS ACTUAL (including transfers)
JULY/AUG/SEPT	97	168	107
OCT/NOV/DEC	87	42	4
JAN/FEB/MAR	40	0	0
APR/MAY/JUNE	-5	0	0

GOALS AND ACTUAL NEW CLUBS CUMULATIVE



GOALS AND ACTUAL MEMBERS CUMULATIVE



DROPPED CLUBS: 0

24 CLUBS OF 59 ADDED 1 OR MORE NEW MEMBERS

GENDER DISTRIBUTION

MALE 1,135 (63.13%)  
 FEMALE 663 (36.87%)  
 Women Percentage Fiscal Year Goal: 36%

DROPPED MEMBERS

[CLICK HERE FOR CUMULATIVE MEMBERSHIP DATA](#)

DECEASED	0
CLUB CANCELLED	0
OTHER	111
<b>TOTAL</b>	<b>111</b>

TOTAL FAMILY UNIT MEMBERS	762
FAMILY MEMBERS PAYING HALF DUES	402